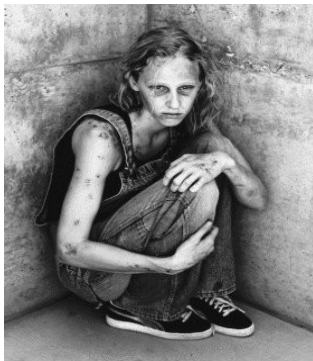


Our objectives:

- To serve as a support group for mothers and others whose loved ones are, or have been, addicted to methamphetamine.
- To inform parents and others about methamphetamine, including the signs of addiction, so they can intervene with their own children early in the addiction process.
- To raise public awareness among children, teens and adults about the dangers and devastation associated with even casual use of methamphetamine.
- To help parents in crisis, especially those looking for treatment options and intervention opportunities.



**MEETINGS ARE HELD
TWICE MONTHLY.**

Support provided in part by
Office of National Drug Control
Policy - Drug Free Communities
Program - SAMHSA, and
Casa Grande Alliance

Mothers and
Others of
Methamphetamine
Addicts



Casa Grande Alliance
317 E. Cottonwood Lane, Suite A
Casa Grande, AZ 85222
Contact phone: 520-836-5022
Cgalliance@cybertrails.com

Established 2004

What is methamphetamine?

Meth is an extremely addictive drug that causes significant brain damage. It is related to cocaine, but it is much more toxic to brain cells. It is commonly smoked in a glass pipe, but can be snorted or injected. The drug is made and sold illegally. The high that meth produces results from a huge surge of a chemical in the brain called dopamine. The high is long-lasting and intense. When the drug wears off, the user "crashes", resulting in physical and emotional pain, agitation and depression.



Methamphetamine

Courtesy of DEA.gov



Photos courtesy of Pinal County Adult Probation

This woman was first arrested in Florida in 1979 on charges of drug possession and prostitution. She was 31 years old (far left). The following booking photos, taken three, seven and nine years later, show the toll that drug use took on her body.

Casa Grande Dispatch 8-04

Methamphetamine is addictive,

often after just a few uses. The user fixates upon getting and using the drug, abandoning all else, including school, work, and family relationships. Addicts will do anything to get the drug - steal from family and friends, sell their bodies, and engage in criminal acts. The damage sustained is physical, emotional, financial and social. Brain chemistry is permanently altered and the user often develops depression or other forms of mental illness.

CASA GRANDE MOTHERS AND OTHERS OF METH ADDICTS

Meth use ages the body and the soul.

What can I do?

- Never use methamphetamine!
- Learn more about methamphetamine, and talk openly with your loved ones about its dangers.
- Learn the signs of meth use and addiction. Watch for them in the people around you.
- If you suspect someone you love is using meth, urge them to get help *today*. There is treatment available, but chances for success diminish the longer the person uses the drug.
- Contact MOMA if your loved one is using meth. We want to inform and support families through their time of crisis.

**MEETINGS ARE HELD
TWICE MONTHLY.
CALL FOR DAY & TIME.**